

1500kW/2236kWh

Technical parameters

battery storage parameters

BATTERY STORAGE PARAMETERS	
Nominal AC power of the inverter (set)	1500 kW
cos φ (adjustable)	0.9 leading ÷ 1 ÷ 0.9 lagging
Nominal grid voltage (phase-phase)	630 V
Grid voltage range	567 ÷ 690 V
Nominal frequency of grid voltage	50 Hz
Installed battery capacity	2236 kWh
DoD	90 – 95%
INVERTER:	
Model:	PCS-9567-1575
AC Side	
Nominal AC power of the inverter	1650 kVA / 1575 kW
cos φ (adjustable)	0.9 leading ÷ 1 ÷ 0.9 lagging
Max AC current	1 588 A
Nominal grid voltage (phase-phase)	550 V
Grid voltage range	500 ÷ 600 V
Nominal frequency of grid voltage	50 Hz
I THD	< 3%
DC Side	
Nominal DC current	1833 A
Voltage range	850 ÷ 1500 V
General	
Maximum efficiency	99%
Inverter cooling	Controlled ventilation
Operating temperature	-35 ÷ +60 °C
Dimensions (w x h - d) and weight	1200x1450-2350 mm, 1 600 kg
Protection	IP65
Battery rack (parameters of 1pc rack)	
Battery rack type	R452280-P
Type of battery cells used	CATL prismatic - 280Ah
Battery cell technology	LFP
Connection of battery cells in battery module	52 in series
Connection of battery modules in battery rack	8 in series

CERTIFICATES AND STANDARDS



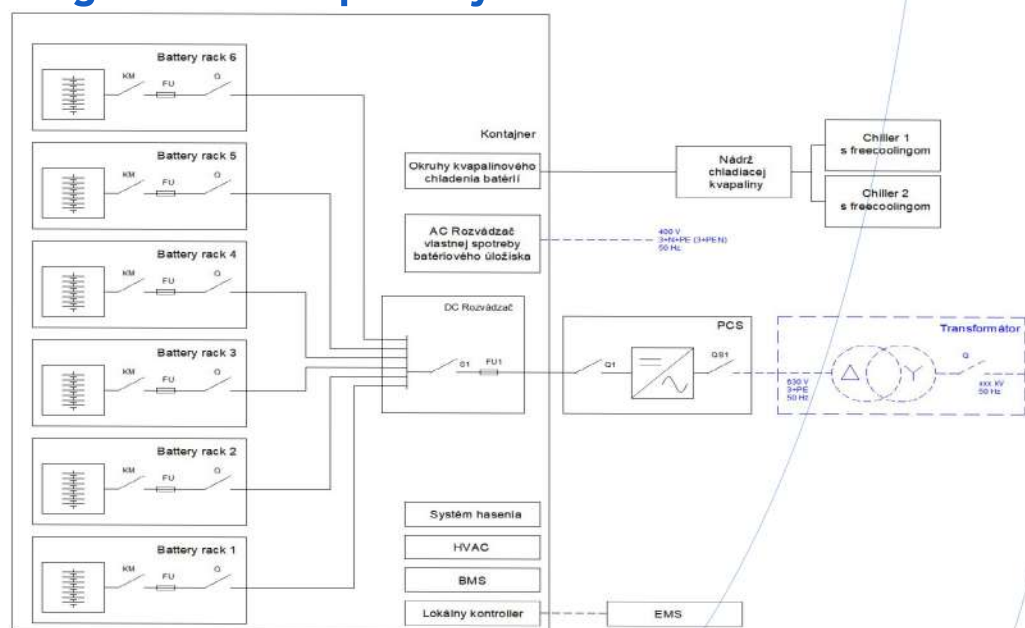
1500kW/2236kWh

Technical parameters

battery storage parameters

Electric Parameters	
Installed energy	372.7 kWh
Usable energy	335.4 kWh
Nominal DC voltage	1331.2 V
Operating range of DC voltage	1164.8 ÷ 1497.6 V
Maximum charging power	1P
Maximum discharging power	1P
Charging method	CC – CV
Energy storage efficiency (Round Trip DC Efficiency)	> 92 %
Mechanical Parameters	
Dimensions (w x h - d)	935 x 1285 - 2329 mm
Weight	3100 kg
Enclosure rating	IP20
Environment	
Operating temperature (liquid cooling)	15 ÷ 21 °C
Relative humidity during storage	< 95 %
Operating temperature - battery discharging	0 ÷ 55 °C
Battery cooling	50% ethylene glycol solution
Expected Lifespan	
Expected number of cycles at 90% DoD, 70% SoH, 18°C	6000
Expected lifespan Up to	15 years

Schematic diagram of the repository



CERTIFICATES AND STANDARDS



1500kW/2236kWh

Specifications



Battery rack

(illustrative image of a rack with 8 battery modules installed)

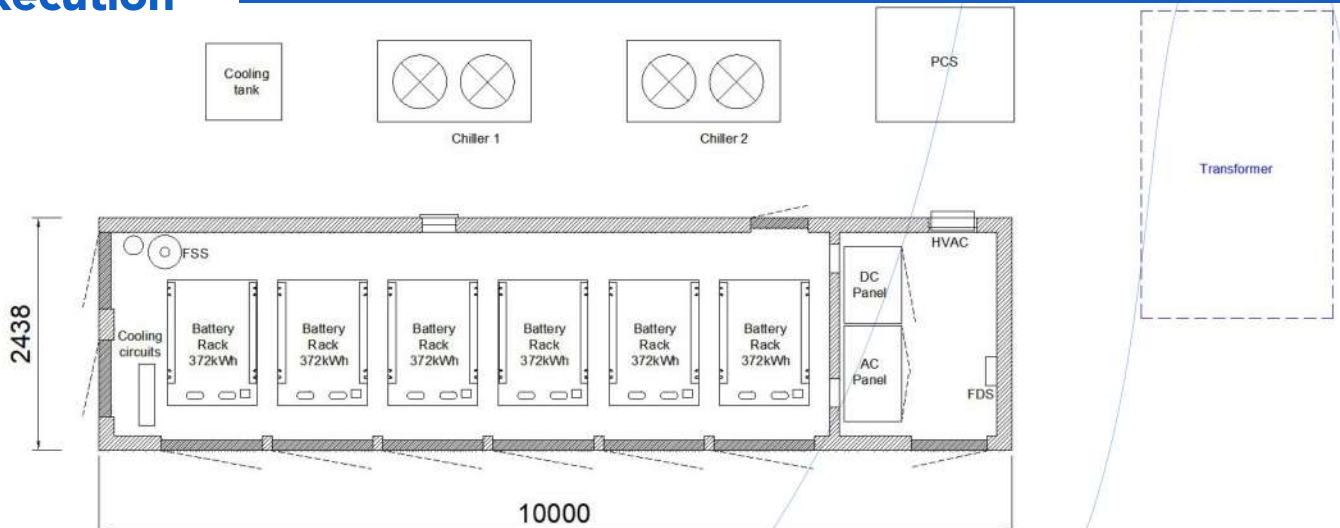


Converter MEGA0100TS

(illustrative image)

Battery storage with an electrical power of 1500 kW and an installed battery capacity of 2236 kWh, consisting of:	
Container - battery room - switchgear room - insulation - electrical sockets, lighting - power DC distribution, communication, control, AC power	1 pc
Bidirectional inverter NR-PCS-9567-1575	1 pc
Power distribution panel - DC circuits, battery protection - AC circuits - distribution of own consumption	1 pc
Data distribution panel - BMS - Local controller	1 pc
Battery racks CATL R452280-P (372.7 kWh) - Cooling with ethylene glycol solution	6 pc
Technological fire extinguishing system	1 pc
Battery cooling system - 2x chiller - Air conditioning unit - fittings - pipes	1 set
Battery storage monitoring (cloud access)	Yes
Commissioning and testing	
Commissioning and handover for use	Yes

Execution



CERTIFIKÁTY A NORMY

